

MOTOR B3/B14; L* = DEPENDENT ON MOTOR
FLANGES DIN PN10

DIMENSIONS IN [mm]

SIZE	DN		PUMP DIMENSIONS				A	MOTORFRAME & BASEPLATE				WEIGHT W/O MOTOR [kg]
	IN	OUT	a	f	h1	h2		90	100	112	132	
32-25-125	32	25	80	f1*	112	130	60	2.1	2.1	2.1		20
32-25-160	32	32	87	f2*	132	160	60		3.1	3.1	4.1	26
50-32-160	50	32	87	f2*	132	160	60		3.1	3.1	4.1	30

f / MOTORFRAME

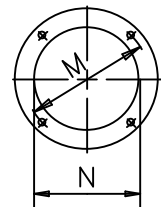
f1* = 203 / 90

f1* = 213 / 100+112

f2* = 230 / 100+112

f2* = 250 / 132

ISO NO.	BASEPLATE							h	Ø D	E	WEIGHT [kg]
	L1	L2	L3	B1	B2	B3					
2.1	600	130	340	270	360	320	90	4x20	8	20	
3.1	600	150	300	300	390	350	90	4x20	8	22	
4.1	600	170	260	340	450	400	90	4x24	8	24	



VALID ONLY WITH SIGNATURE

DATE

SIGNATURE

CUSTOMER

ORDER-NO.

ITEM

CP-NO.

MOTOR CONNECTION DIMENSIONS

SIZE	M	N
90	130	110
100	130	110
112	130	110
132	215	180