



Drain plug with MKP: Normal situation, mounted.



Drain plug with MKP: removed.



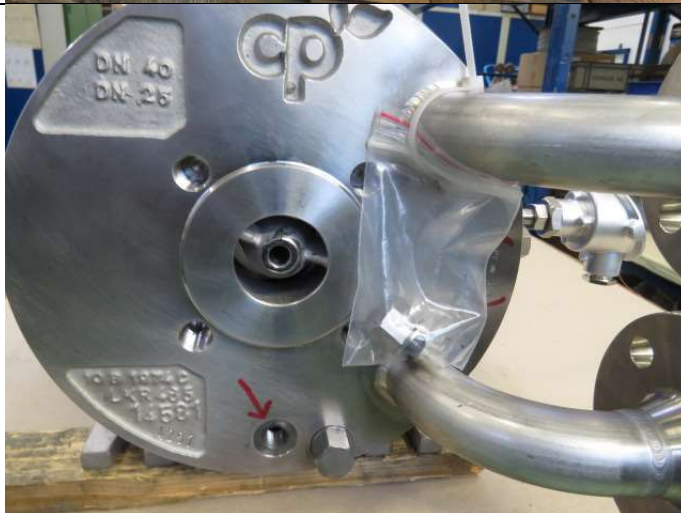
Drain plug with MKP: supplied attached loose to pump.



Drain plug with MKP with heating jacket and heating connections: Normal situation, mounted.



Drain plug with MKP with heating jacket and heating connections: removed.



Drain plug with MKP with heating jacket and heating connections: supplied attached loose to pump.



Drain plug with MKPL: Normal situation, mounted.



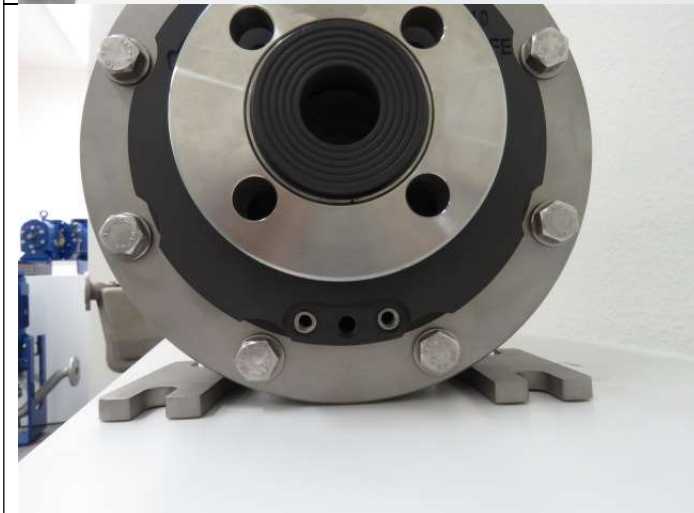
Drain plug with MKPL: removed.



Drain plug with MKPL: supplied attached loose to pump.



Drain plug with MSKP: Normal situation, mounted.



Drain plug with MSKP: removed.



Drain plug with MSKP: supplied attached loose to pump.



**Declaration of Decontamination for Repairs  
(Pumps, Modifications, Pump-Components)  
Additional Information – Drain plug**

Formular  
**QM 02 P3-F9-e**  
Datum: 22.10.2019



After dismantling, fit the pump safeguards!