

Preparation Transport Repairs

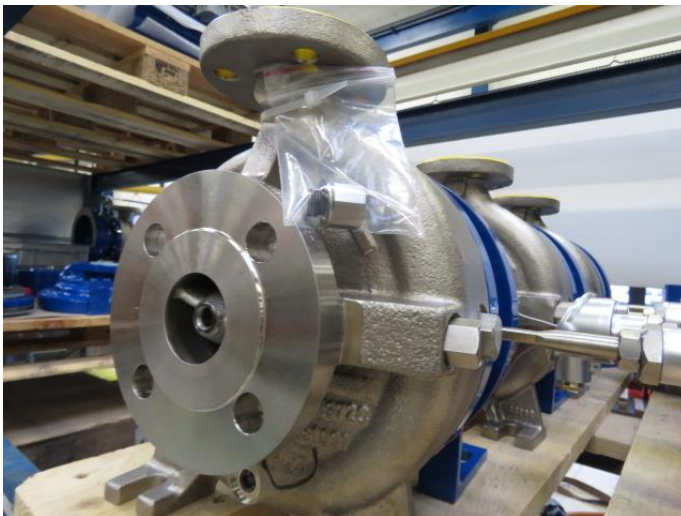
Removing the drain plug



Drain plugs on MKP & MKP-S:
Normal situation, **installed**.



Drain plug on MKP & MKP-S:
removed

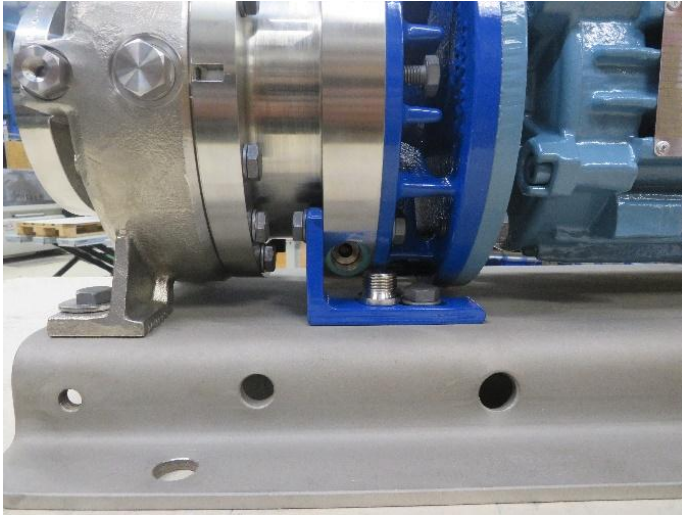


Drain plug on MKP & MKP-S:
supplied **loose**; **attached to pump**.



Preparation Transport Repairs

Removing the drain plug



Lantern plug on MKP & MKP-S:
supplied **loose; attached to pump.**



Preparation Transport Repairs

Removing the drain plug



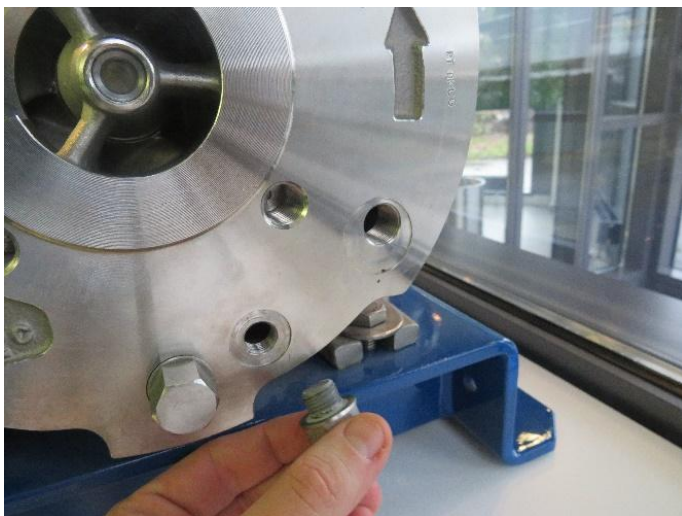
Drain plug for MKP with heating chamber:

Normal situation, **installed**.



Drain plug for MKP with heating chamber:

removed



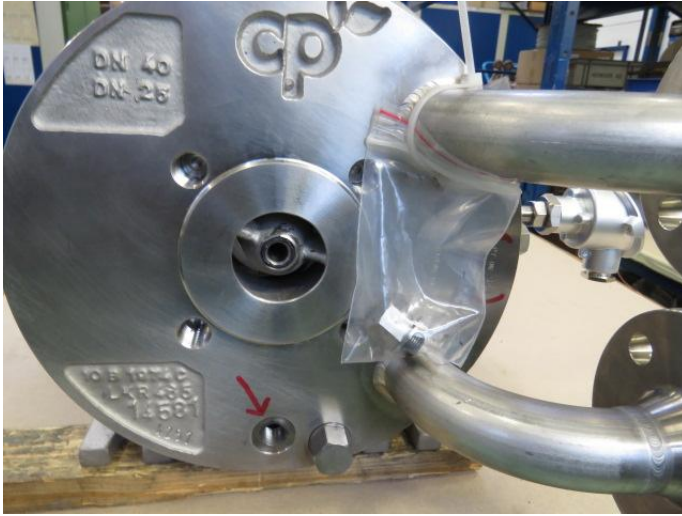
Drain plug for MKP with heating chamber:

removed

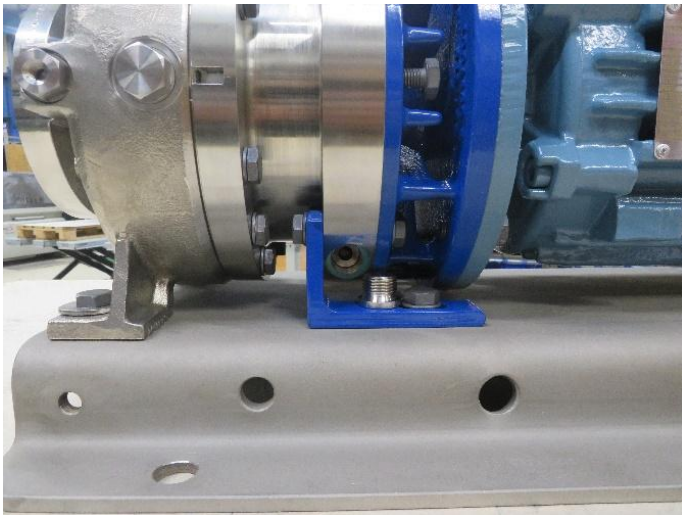


Preparation Transport Repairs

Removing the drain plug



Drain plug casing and heating chamber for MKP with heating housing: supplied **loose**; attached to pump.



Lantern plug on MKP with heating chamber: supplied **loose**; attached to pump.

Preparation Transport Repairs

Removing the drain plug



Drain plug on MKPL & MKPL-S:
Normal situation, **installed**.



Drain plug on MKPL & MKPL-S:
removed

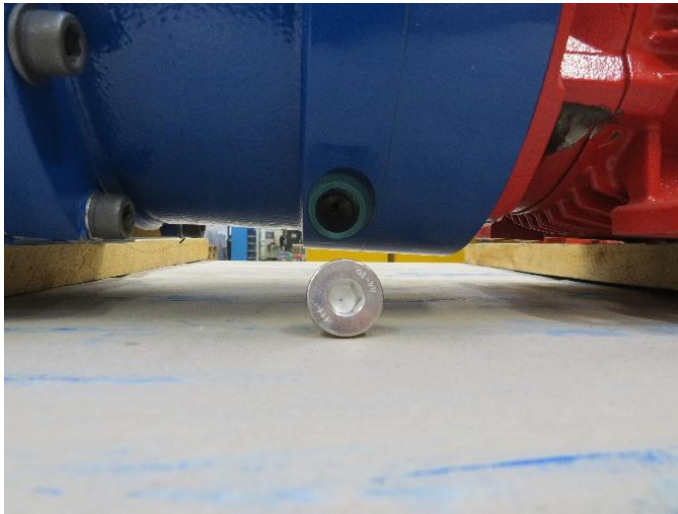


Drain plug on MKPL & MKPL-S:
supplied **loose**; **attached to pump**.



Preparation Transport Repairs

Removing the drain plug



Lantern plug at MKPL & MKPL-S:
supplied **loose**; **attached to pump**.

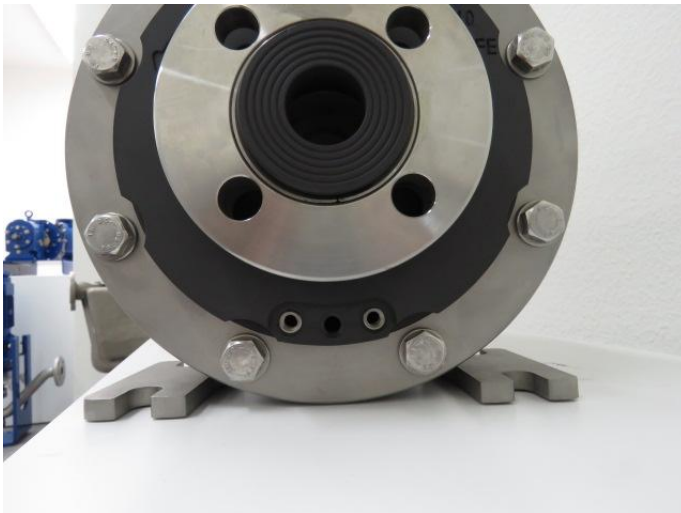


Preparation Transport Repairs

Removing the drain plug



Drain plug on MSKP:
Normal situation, **installed**.



Drain plug on MSKP:
removed



Drain plug on MSKP:
supplied **loose**; **attached to pump**.



Preparation Transport Repairs

Removing the drain plug



When removing the pump, if available, be sure to fit the transport lock!